



2022
Elementary and Junior High Schools
COVID-19
SAFETY PLAN

**For In-Person Instruction in Accordance with the
California Department of Public Health Guidelines**

**This is a working document and information may be subject to change as
directed by federal or state law and regulations or guidance.**

A Healthy Emotional and Spiritual Environment

Students will be encouraged to do the following to ease worry or anxiety:

- Share concerns and feelings.
- Seek peace through prayer.
- Find comfort and wisdom in God's Word.
- Take breaks from social media and news stories.
- Respect others wearing masks.

A Healthy Social Environment

Students will be encouraged to practice appropriate social distancing:

- Create distancing on the playground and blacktop to utilize open spaces.
- Separate chapel will be held for TK-1st grades and 2nd-8th grades to lessen crowding.

The following healthy physical practices will be implemented:

As mandated, students and staff are required to wear masks indoors unless a doctor's mask exemption is on file in the school office.

- Masks can be removed for snack, meals, and outdoor class instruction and outdoor play.
- Each student's supplies will be kept separately in labeled containers.
- Sharing of students' personal snacks, food, or drinks will not be allowed.

A Healthy Physical Environment

Students will be taught healthy hygiene practices:

- Germs can get into the body through the eyes, nose, and mouth.
- Germs can make us sick.
- Germs from unwashed hands can get into food and drinks.
- Germs from unwashed hands can be transferred to other objects.
- Washing hands prevents illness and the spread of infection to others.

The following healthy hygiene practices will be reinforced:

- Use tissue to wipe their nose.
- Cough or sneeze inside a tissue or an elbow.
- Wash hands after coughing/sneezing, outside play, restroom use, and before eating.
- Wash their hands for 20 seconds with soap.
- Students are instructed to use hand sanitizer in classrooms and handwashing stations.

The school will use disinfectant products that have been shown to be effective against COVID-19 and newly implemented cleaning routines will continue:

- Frequently touched surfaces within the school will be cleaned daily.
- Thorough cleaning of classrooms occurs daily by a professional service.
- Water filling stations will be used to refill personal, reusable water bottles.

School lunches should be individually packed:

- Students may order Choice Lunch: pre-selected, individually packaged items.
- Hot Box lunches are stored in a container and labeled with the student's name.
- Lunch bags should be washed daily at home.

School COVID-19 Procedures:

COVID-19 Symptom Precautions

- Daily visual wellness monitoring of COVID-19 symptoms will occur.
- Parents are encouraged to monitor their child's symptoms and temperature daily.
- Parents are required to keep students home if **any** household members are presenting symptoms. All staff are responsible for self-monitoring of symptoms.
- COVID-19 symptoms include:
 - Fever of 100.4
 - Cough
 - Shortness of breath or difficulty breathing
 - Chills
 - Fatigue
 - Muscle or body aches
 - Headache
 - Sore throat
 - New loss of taste or smell
 - Nausea/vomiting
 - Congestion/runny nose
 - Diarrhea
- Elementary/junior high staff are vaccinated OR test weekly. Records of vaccination and weekly testing will be kept on file in the school office.
- Parent volunteers will be required to present their vaccination record or a negative test result within 72 hours of the time of volunteering. Records of vaccination and testing will be kept on file in the school office.
- Disinfection and cleaning of the classrooms will occur daily.

COVID-19 Symptom Procedures

- Individuals who display symptoms of COVID-19 should refer to page 7 for procedures.

- Students or staff with any of the COVID-19 symptoms will be sent home with testing required. A student or staff member may return to school with a negative test result, improving symptoms, and fever free without medication.

COVID-19 Exposure Procedures:

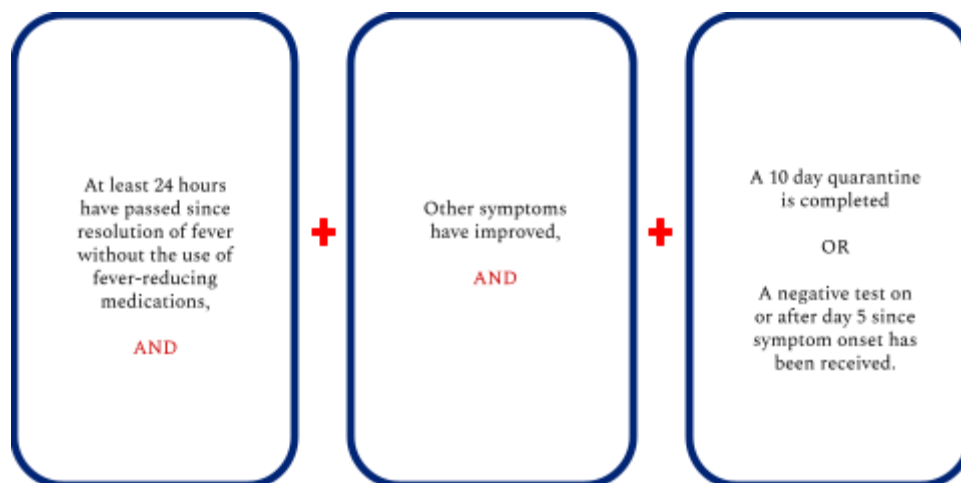
- The school will check state and local orders and health department notices and adjust school operations as needed to ensure safe practices. If the governor issues a mandatory stay at home executive order, the school will move to distance learning utilizing live, interactive, digital classroom meetings, and educational technology, such as Google Classroom and the SeeSaw App.
- If a student has been exposed to COVID19, refer to page 8 for procedures.
- If a staff member has been exposed to COVID19, refer to page 9 for procedures.

COVID-19 Positive Case Quarantine Procedures:

- When a positive COVID-19 case has been identified, refer to page 10 for procedures.
- In collaboration with the local public health department, school administration will decide whether a classroom or school closure is warranted.
- In order to maintain confidentiality, the school will not release the identity of the positive case to the school population.

CDPH Return to School Criteria for Positive Cases

Students and staff, who have tested positive for COVID-19, may return to campus in person when the CDPH criteria to return to school is met:



Case Reporting:

- Kim Winger (kim.winger@gracechristianschools.org) is the COVID-19 designated point of contact person, and she will report COVID-19 school cases to the school population and the Orange County Health Agency.

COVID-19 Resources:

COVID-19 Testing Locations Map:

<https://occovid19.ochealthinfo.com/testing-resources-orange-county>

<https://occovid19.ochealthinfo.com/covid-19-testing>

COVID-19 Vaccinations Locations Map:

[Vaccines.gov - Find COVID-19 vaccine locations near you](https://www.vaccines.gov)

COVID-19 School Guidelines:

[K-12 Guidance 2021-22 School Year \(ca.gov\)](https://www.ca.gov)

[OC Health Officer's Orders & Recommendations | Novel Coronavirus \(COVID-19\) \(egovoc.com\)](https://www.egovoc.com)

Please see the COVID-19 Procedure Charts on the following pages:

Displaying Symptoms:

If an individual **has symptoms** of COVID19, follow these steps:

Has the individual tested negative from **symptom onset**?
Antigen tests are recommended.
(LAMP and NAAT tests are also acceptable.)

Yes

Does the individual meet **BOTH** of the following:
- Symptoms are improving.
- Fever has been gone for 24 hours without medication.

Yes

The individual **MAY** end their 10 day quarantine.
The individual should still wear a mask around others for 10 days **REGARDLESS** of ending quarantine.

No

The individual **MAY NOT** end their 10 day quarantine, until symptoms begin improving. The individual should still wear a mask around others for 10 days **REGARDLESS** of ending quarantine.

No

Refer to the "Positive Case" chart.

Note:

- Quarantine ends after 10 days **REGARDLESS** of lack of test, presence of symptoms, or repeat positive testing.
- An "at home" test is acceptable **ONLY IF** the test administration is observed by an office staff member. Email elementary.office@gracechristianschools.org if you want this testing option.

Symptoms:

- | | |
|---|------------------------------|
| - Fever | - Cough |
| - Shortness of breath or difficulty breathing | - Chills |
| - Fatigue | - Muscle or body aches |
| - Headache | - Diarrhea |
| - Sore throat | - New loss of taste or smell |
| - Nausea/vomiting | - Congestion/runny nose |

TK-12 Grade Student Exposure:

If a student was **exposed** to COVID19 and is **asymptomatic (no symptoms)** follow these steps:

Has the student received the COVID19 vaccine and booster if 5 months have passed since receiving the COVID19 vaccine (booster is only necessary for ages 12 and older at this time.)

OR

Has the student been positive for COVID19 in the past 3 months? Note: The first day of symptoms is counted as day one.

Yes

The individual **DOES NOT** need to quarantine. However, the individual must test on day 5 from exposure and isolate if positive. Antigen tests are recommended. (LAMP and NAAT tests are also acceptable.)

No

Was the student exposed inside the classroom?

Yes

The student **DOES** need to quarantine for 10 days, or until receiving a negative test on or after the 5th day of quarantine. However, the student may remain at school during the first 5 days of quarantine if a mask is worn at all times (except during eating), **AND** the student tests negative twice. Antigen tests are recommended. (LAMP and NAAT tests are also acceptable.)

No

Has the student tested negative on or after the 5th day since **exposure**? Antigen tests are recommended. (LAMP and NAAT tests are also acceptable.)

Yes

The individual **MAY** end their 10 day quarantine. The individual should still wear a mask around others for 10 days **REGARDLESS** of ending quarantine.

No

The individual **MAY NOT** end their 10 day quarantine.

Note:

- Quarantine ends after 10 days **REGARDLESS** of lack of test, presence of symptoms, or repeat positive testing.
- Quarantine begins from whichever comes first: positive test or symptom onset.
- An “at home” test is acceptable **ONLY IF** the test administration is observed by an office staff member. Email elementary.office@gracechristianschools.org if you want this testing option.

Additionally, if the individual **develops symptoms** at any point during 10 days from exposure, refer to the “Symptomatic” chart.

Non-Student Exposure:

If an individual has **been exposed** (within 6 feet for a cumulative 15 minutes or more within 24 hours) to COVID19 and is **asymptomatic (no symptoms)**, follow the steps below:

Has the individual received the COVID19 vaccine and received the booster if 5 months have passed since receiving the COVID19 vaccine?

Yes

The individual **DOES NOT** need to quarantine. However, the individual must test on day 5 from exposure and isolate if positive. Antigen tests are recommended. (LAMP and NAAT tests are also acceptable.)

No

Has the individual been positive for COVID19 in the past 3 months? The first day of symptoms is counted as day one.

Yes

The individual **DOES NOT** need to quarantine. However, the individual must test on day 5 from exposure and isolate if positive. Antigen tests are recommended. (LAMP and NAAT tests are also acceptable.)

No

The individual **DOES** need to quarantine for 10 days from exposure. The quarantine may end if the individual tests negative on or after the 5th day since **exposure**. Antigen tests are recommended. (LAMP and NAAT tests are also acceptable.)

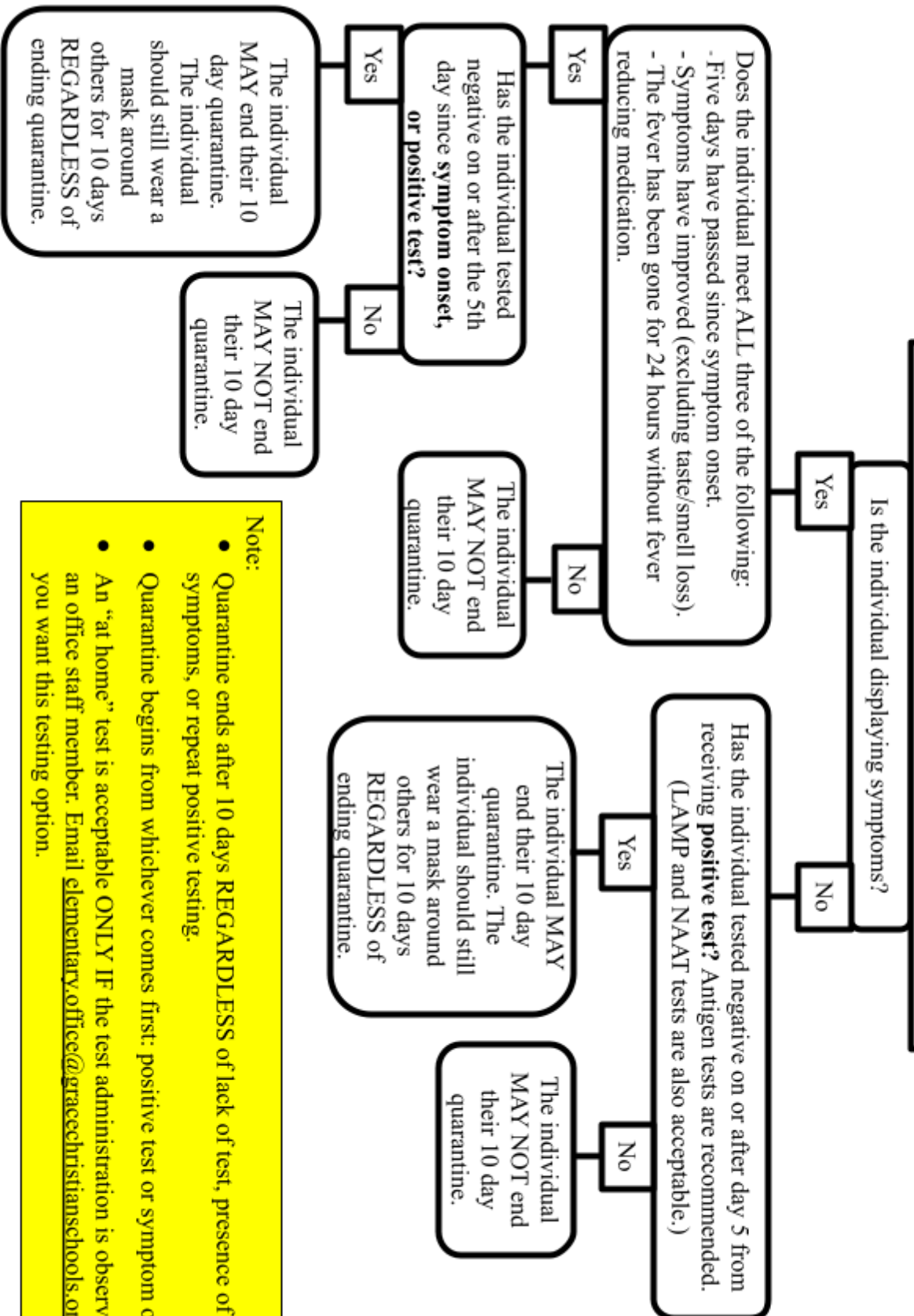
Note:

- An "at home" test is acceptable **ONLY IF** the test administration is observed by an office staff member. Email elementary.office@gracechristianschools.org if you want this testing option.

Additionally, if the individual **develops symptoms** at any point during 10 days from exposure, refer to the "Symptomatic" chart.

Tested Positive:

If an individual **tests positive** for COVID19, follow these steps:



Note:

- Quarantine ends after 10 days REGARDLESS of lack of test, presence of symptoms, or repeat positive testing.
- Quarantine begins from whichever comes first: positive test or symptom onset.
- An “at home” test is acceptable ONLY IF the test administration is observed by an office staff member. Email elementary.office@gracechristianschools.org if you want this testing option.